



Rain Garden Workshop

**Saturday, June 19th
9:00 AM - 3:00 PM (Eastern)**

**Sullivan Co. Park & Lake
990 Picnic Road
Sullivan, IN 47882**

Topics in this Hands-on Workshop include:

- Site Selection
- Sizing
- Design
- Plant Selection
- Installation Techniques

Attendees will receive a 14-page
Rain Garden Design Handbook
A step-by-step guide to
residential rain garden design

The workshop is *free*, but
REGISTRATION IS REQUIRED..
Please register to attend by contacting
either the Sullivan, Greene, Clay, or
Vigo County SWCD.

Presented by the
West Central Indiana Watershed Alliance
in cooperation with:

Sullivan County SWCD
2316 N Section Street
Sullivan, IN 47882

Clay County SWCD
955 W Craig Avenue
Brazil, IN 47834

Greene County SWCD
104 CR 70 E; Suite B
Bloomfield, IN 47424

Vigo County SWCD
3241 S 3rd Place
Honey Creek West
Terre Haute, IN 47802

Sullivan Co. Recycle Center
321 S Broad St
Sullivan, IN 47882

Sullivan County FSA
2316 N Section Street
Sullivan, IN 47882



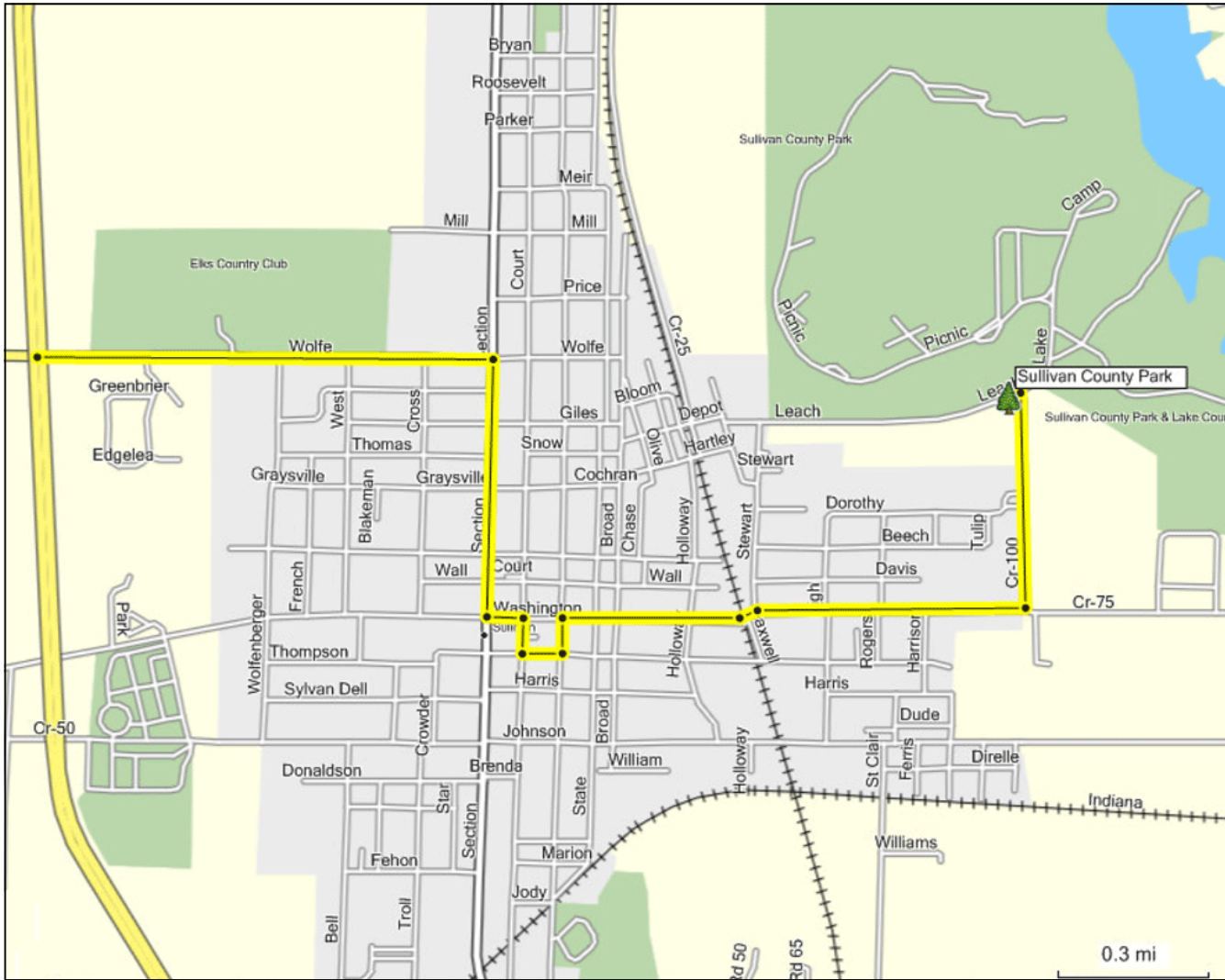
Workshop Sponsored By:

HOOSIERENERGY

Additional Plant Materials Provided By:

Peabody
Peabody Midwest Coal





Driving Directions from Highway 41:

- East on Wolfe Street (Stoplight at Highway 154)
- South on Section Street
- East on Washington (around Courthouse Square) approximately 1.25 miles.
- North on Folley



What is a Rain Garden?

A rain garden is a shallow dish-like depression in the ground that is planted with plants that are tolerant to both wet and dry conditions. These specialized gardens collect, filter, and absorb rain water and snow melt - reducing the volume of polluted water entering streams, lakes, and storm sewer systems.

Park Entry

A list of registered workshop attendees will be provided to the Park & Lake gatekeeper. Parking is available at the Picnic Road Shelterhouse.

What to Expect:

As a Hands-On Workshop, attendees will help with an actual rain garden installation at the Sullivan County Park & Lake Shelterhouse.

Attendees will learn

- How to locate rain gardens
- How to determine soil suitability
- Sizing gardens to accommodate run-off requirements.
- Typical plant selections
- Typical mulch selections
- Maintenance

Lunch will be provided.